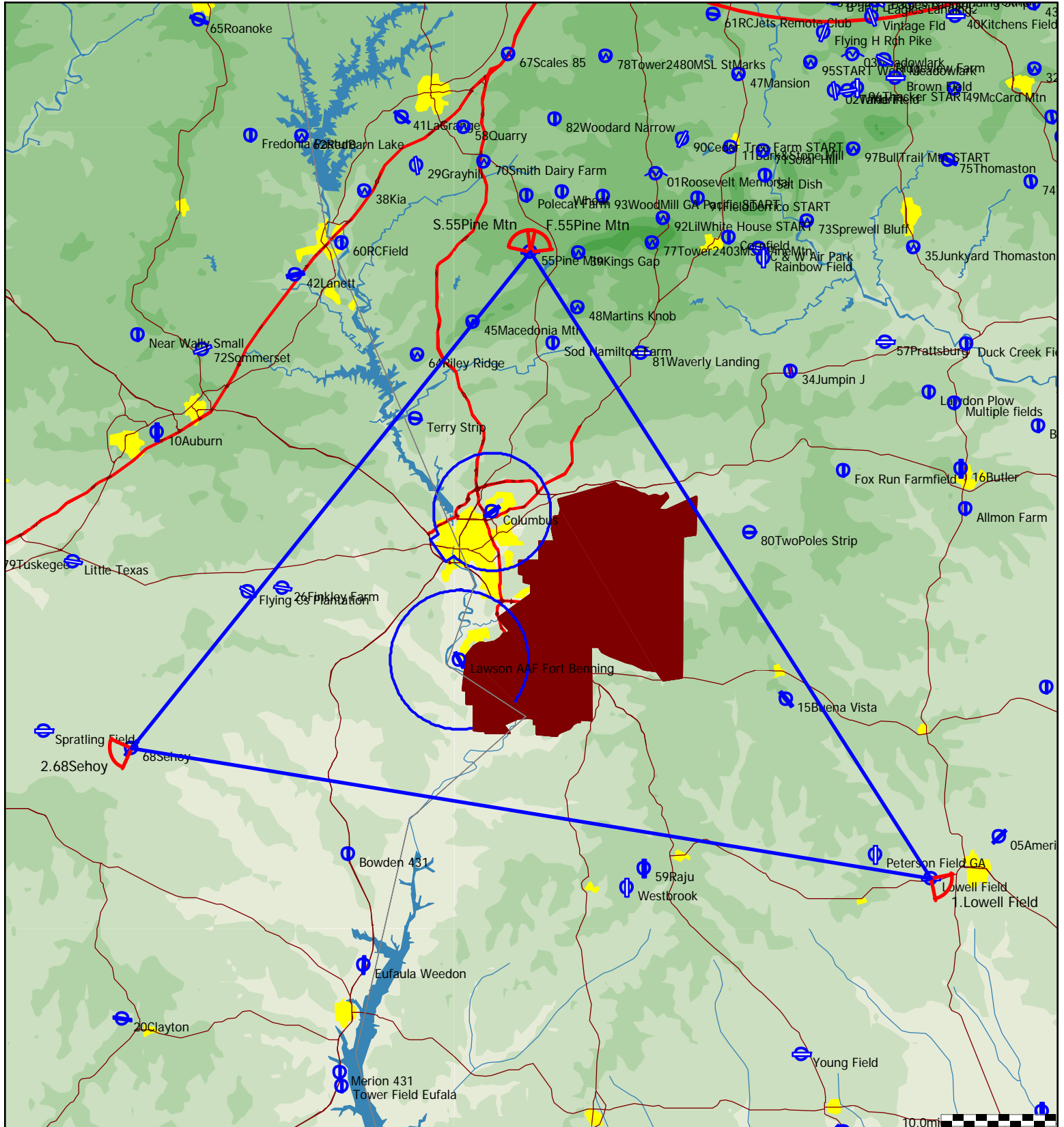




Type: FAI Triangle - (304.2km) [304.2pts]

Task distance: 189.0mi

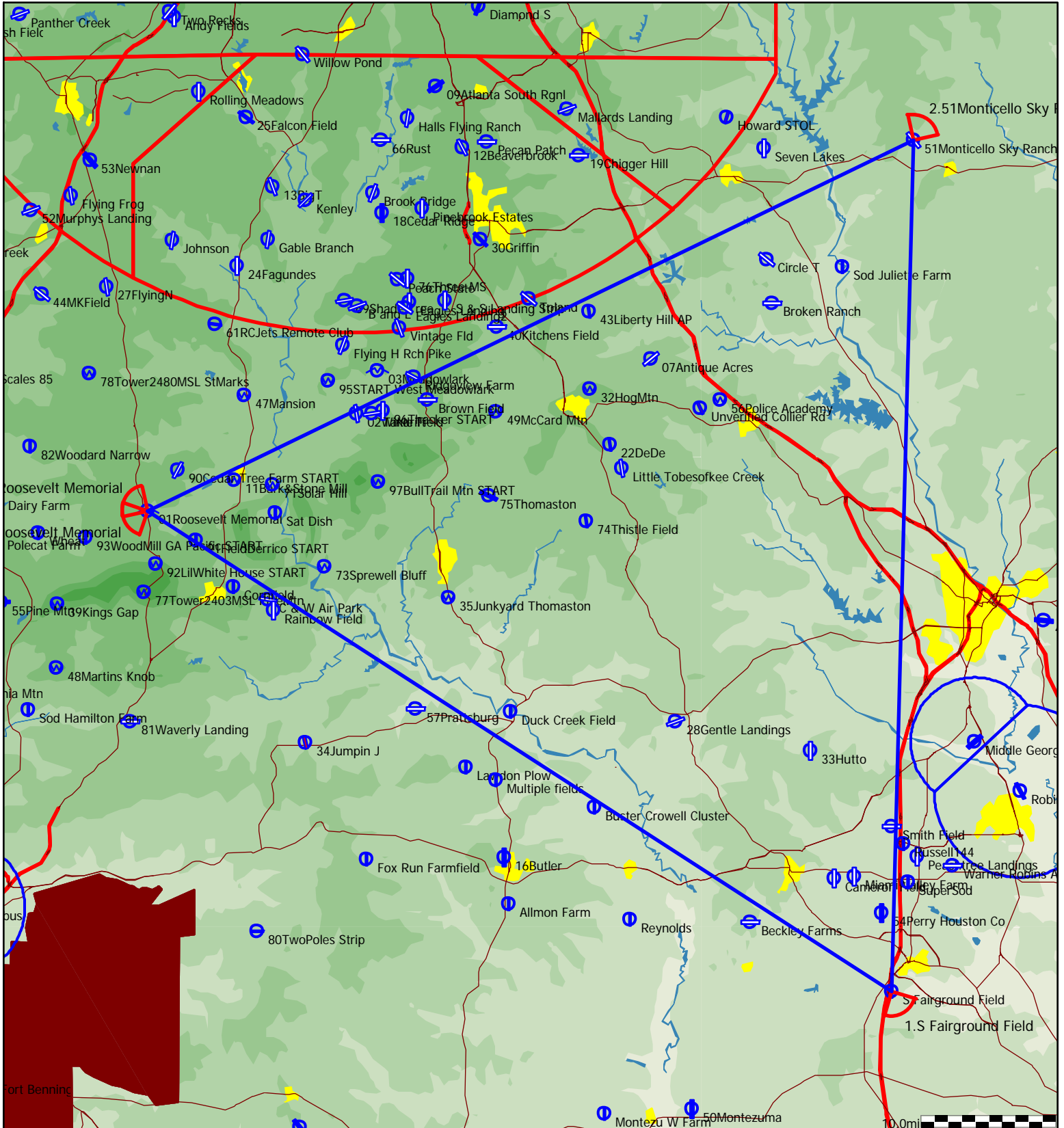
Style	Code	Points	Latitude	Longitude	Dis.	Crs.
Take off	01Rosevl	01Roosevelt Memorial	N32°56'19"	W084°41'47"		
Start	55PineMt	55Pine Mtn	N32°50'27"	W084°52'57"		
1.Point	Lowell	Lowell Field	N32°03'30"	W084°17'25"	64.1mi	147°
2.Point	68Sehoy	68Sehoy	N32°13'17"	W085°28'18"	70.2mi	280°
Finish	55PineMt	55Pine Mtn	N32°50'27"	W084°52'57"	54.8mi	39°
Landing	01Rosevl	01Roosevelt Memorial	N32°56'19"	W084°41'47"		



Type: FAI Triangle - (305.8km) [305.8pts]

Task distance: 190.0mi

Style	Code	Points	Latitude	Longitude	Dis.	Crs.
Take off	01Rosevl	01Roosevelt Memorial	N32°56'19"	W084°41'47"		
Start	01Rosevl	01Roosevelt Memorial	N32°56'19"	W084°41'47"		
1.Point	SoFairFl	S Fairground Field	N32°25'39"	W083°45'17"	65.2mi	122°
2.Point	51Montcl	51Monticello Sky Ranch	N33°19'57"	W083°43'37"	62.4mi	1°
Finish	01Rosevl	01Roosevelt Memorial	N32°56'19"	W084°41'47"	62.4mi	244°
Landing	01Rosevl	01Roosevelt Memorial	N32°56'19"	W084°41'47"		

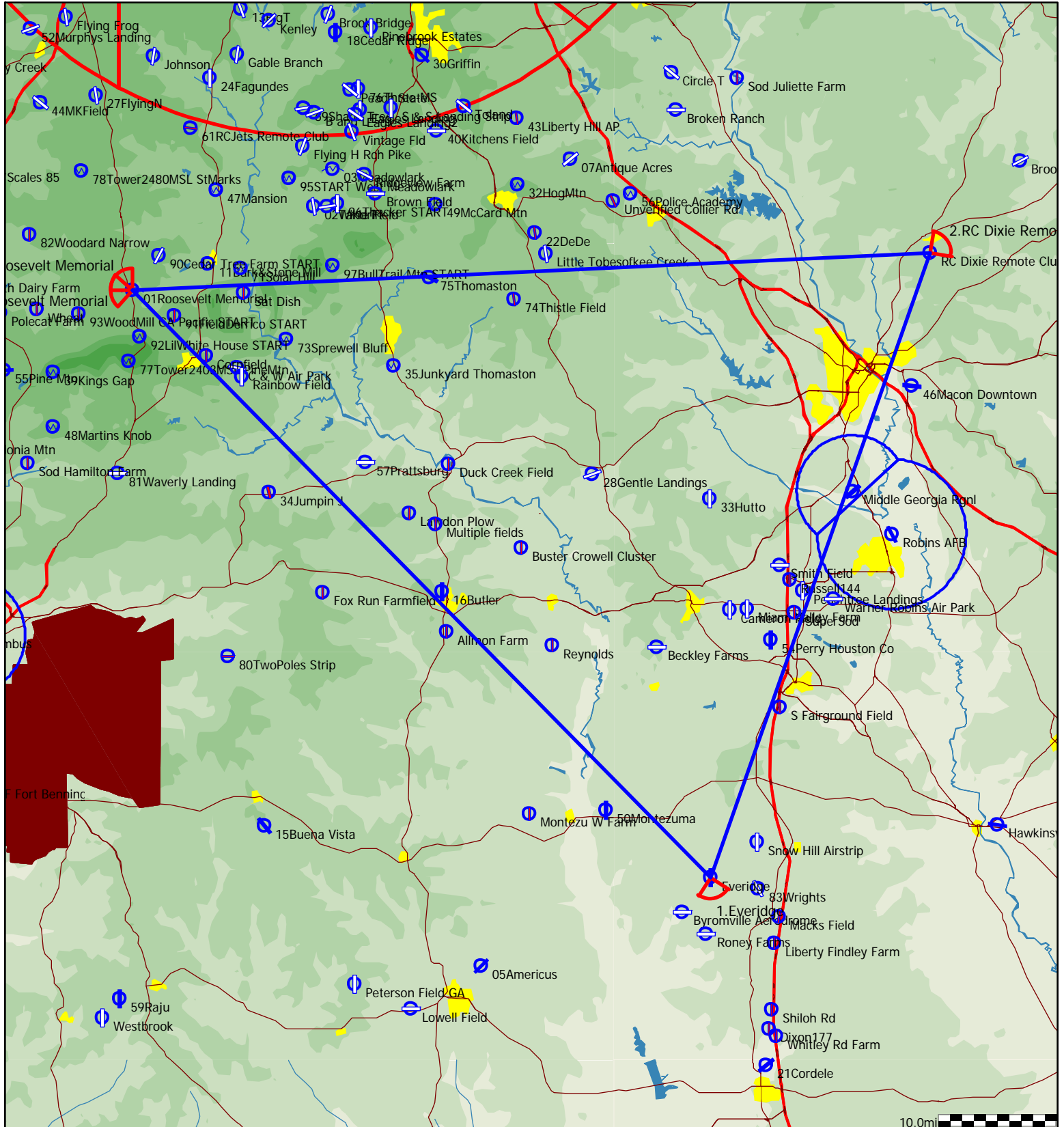




Type: FAI Triangle - (310.8km) [310.8pts]

Task distance: 193.1mi

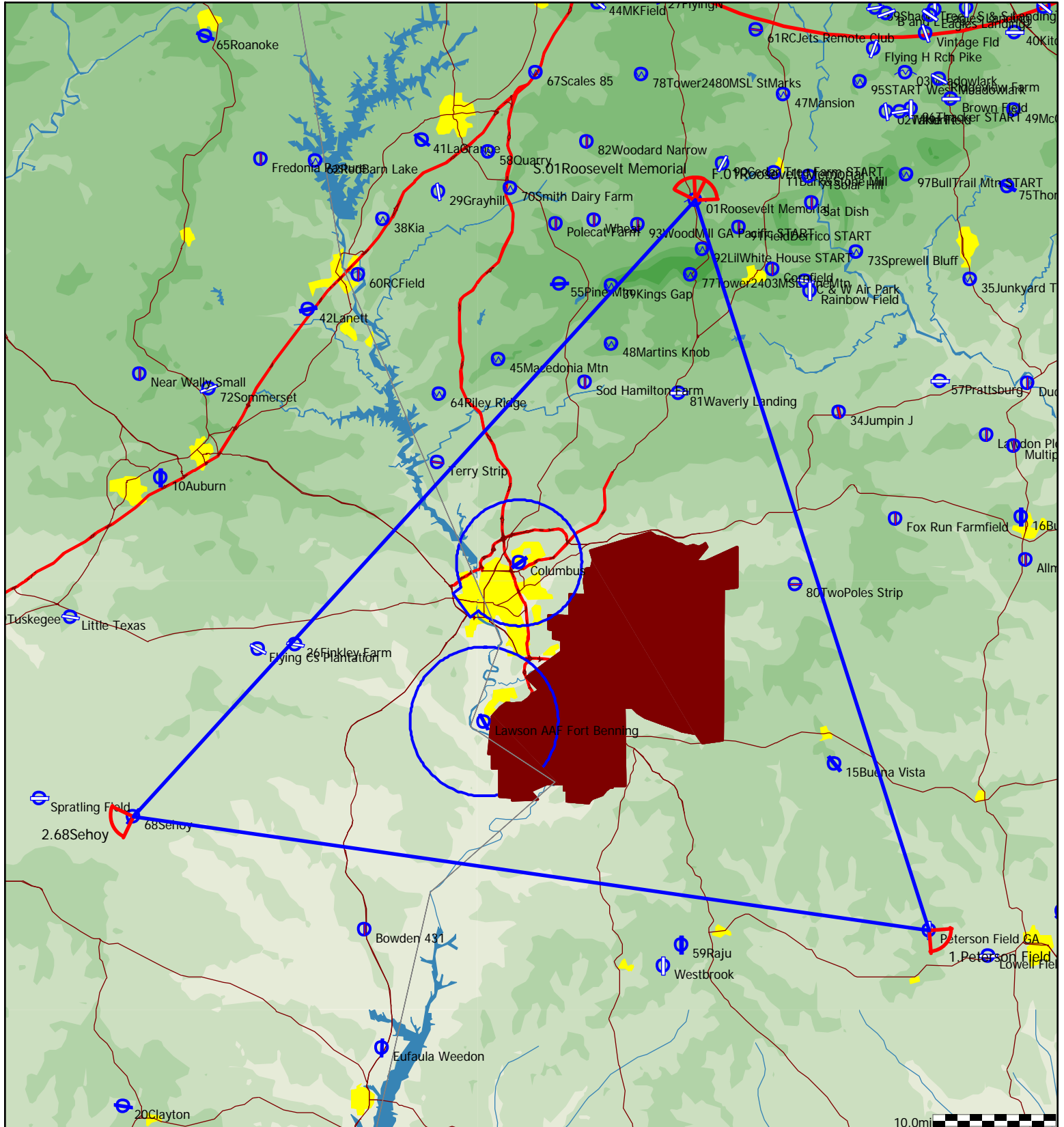
Style	Code	Points	Latitude	Longitude	Dis.	Crs.
Take off	01Rosevl	01Roosevelt Memorial	N32°56'19"	W084°41'47"		
Start	01Rosevl	01Roosevelt Memorial	N32°56'19"	W084°41'47"		
1.Point	Everidge	Everidge	N32°13'11"	W083°51'19"	69.7mi	135°
2.Point	RCDixie	RC Dixie Remote Club	N32°59'03"	W083°32'09"	55.9mi	19°
Finish	01Rosevl	01Roosevelt Memorial	N32°56'19"	W084°41'47"	67.5mi	268°
Landing	01Rosevl	01Roosevelt Memorial	N32°56'19"	W084°41'47"		



Type: FAI Triangle - (311.6km) [311.6pts]

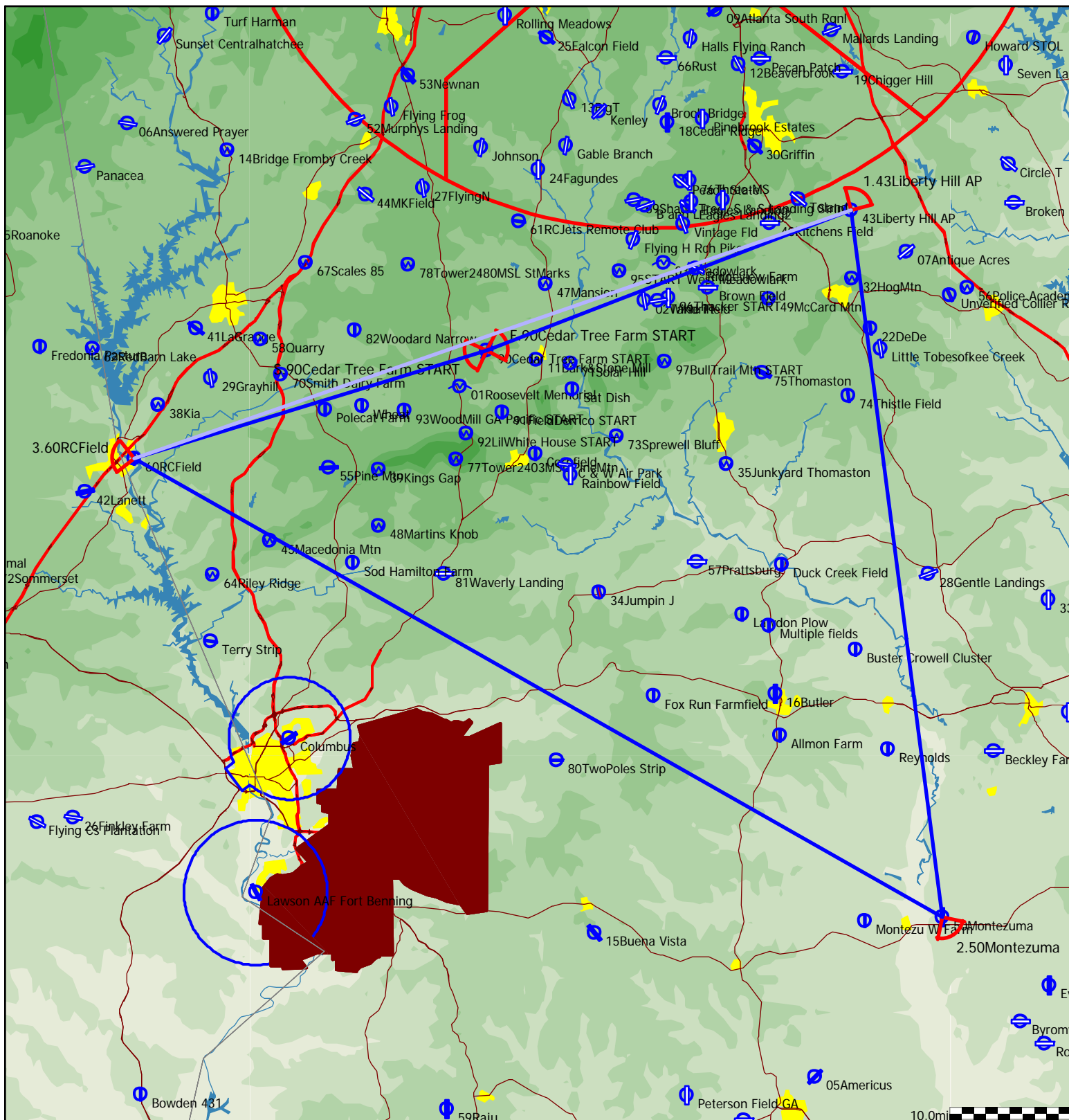
Task distance: 193.6mi

Style	Code	Points	Latitude	Longitude	Dis.	Crs.
Take off	01Rosevl	01Roosevelt Memorial	N32°56'19"	W084°41'47"		
Start	01Rosevl	01Roosevelt Memorial	N32°56'19"	W084°41'47"		
1.Point	PetrGA	Peterson Field GA	N32°05'19"	W084°22'21"	61.5mi	162°
2.Point	68Sehoy	68Sehoy	N32°13'17"	W085°28'18"	65.1mi	278°
Finish	01Rosevl	01Roosevelt Memorial	N32°56'19"	W084°41'47"	67.0mi	42°
Landing	01Rosevl	01Roosevelt Memorial	N32°56'19"	W084°41'47"		



Task distance: 199.1mi

Style	Code	Points	Latitude	Longitude	Dis.	Crs.
Take off	01Rosevl	01Roosevelt Memorial	N32°56'19"	W084°41'47"		
Start	90CedrST	90Cedar Tree Farm START	N32°58'54"	W084°39'29"		
1.Point	43LibrtH	43Liberty Hill AP	N33°09'01"	W084°08'15"	32.4mi	69°
2.Point	50Montez	50Montezuma	N32°18'07"	W084°00'27"	58.9mi	173°
3.Point	60RCField	60RCField	N32°51'08"	W085°09'38"	77.2mi	300°
Finish	90CedrST	90Cedar Tree Farm START	N32°58'54"	W084°39'29"	30.5mi	73°
Landing	01Rosevl	01Roosevelt Memorial	N32°56'19"	W084°41'47"		

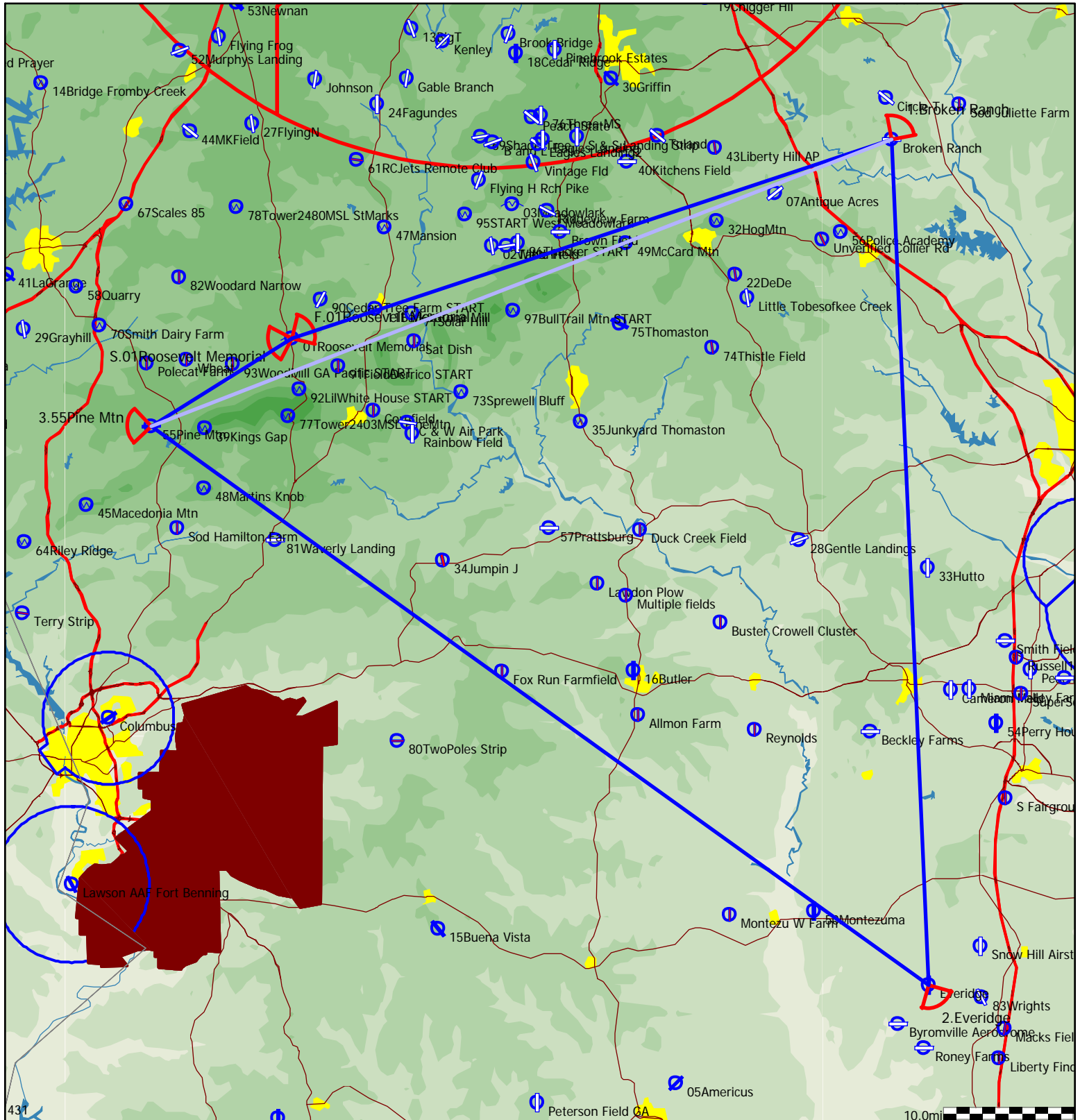




Type: FAI Triangle, Start on leg - (320.8km) [321.2pts]

Task distance: 199.6mi

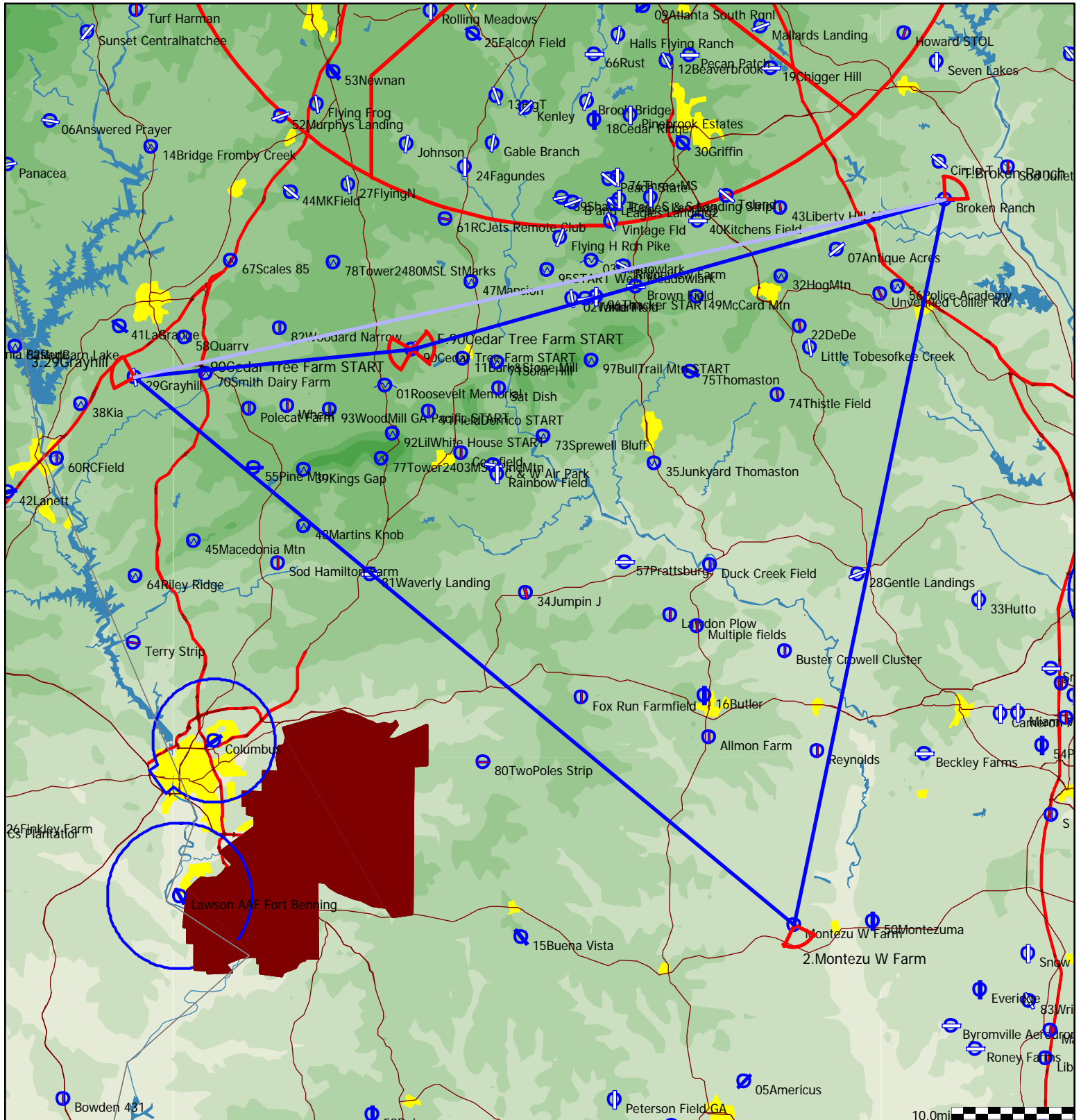
Style	Code	Points	Latitude	Longitude	Dis.	Crs.
Take off	01Rosevl	01Roosevelt Memorial	N32°56'19"	W084°41'47"		
Start	01Rosevl	01Roosevelt Memorial	N32°56'19"	W084°41'47"		
1.Point	BroknR	Broken Ranch	N33°09'34"	W083°54'19"	48.4mi	71°
2.Point	Everidge	Everidge	N32°13'11"	W083°51'19"	64.8mi	177°
3.Point	55PineMt	55Pine Mtn	N32°50'27"	W084°52'57"	73.7mi	306°
Finish	01Rosevl	01Roosevelt Memorial	N32°56'19"	W084°41'47"	12.7mi	58°
Landing	01Rosevl	01Roosevelt Memorial	N32°56'19"	W084°41'47"		



Type: FAI Triangle, Start on leg - (320.6km) [321.Opts]

Task distance: 199.5mi

Style	Code	Points	Latitude	Longitude	Dis.	Crs.
Take off	01Rosevl	01Roosevelt Memorial	N32°56'19"	W084°41'47"		
Start	90CedrST	90Cedar Tree Farm START	N32°58'54"	W084°39'29"		
1.Point	BroknR	Broken Ranch	N33°09'34"	W083°54'19"	45.4mi	74°
2.Point	MntzWFrM	Montezu W Farm	N32°17'51"	W084°07'07"	60.7mi	192°
3.Point	29GrayHI	29Grayhill	N32°56'55"	W085°03'03"	70.5mi	310°
Finish	90CedrST	90Cedar Tree Farm START	N32°58'54"	W084°39'29"	22.9mi	84°
Landing	01Rosevl	01Roosevelt Memorial	N32°56'19"	W084°41'47"		

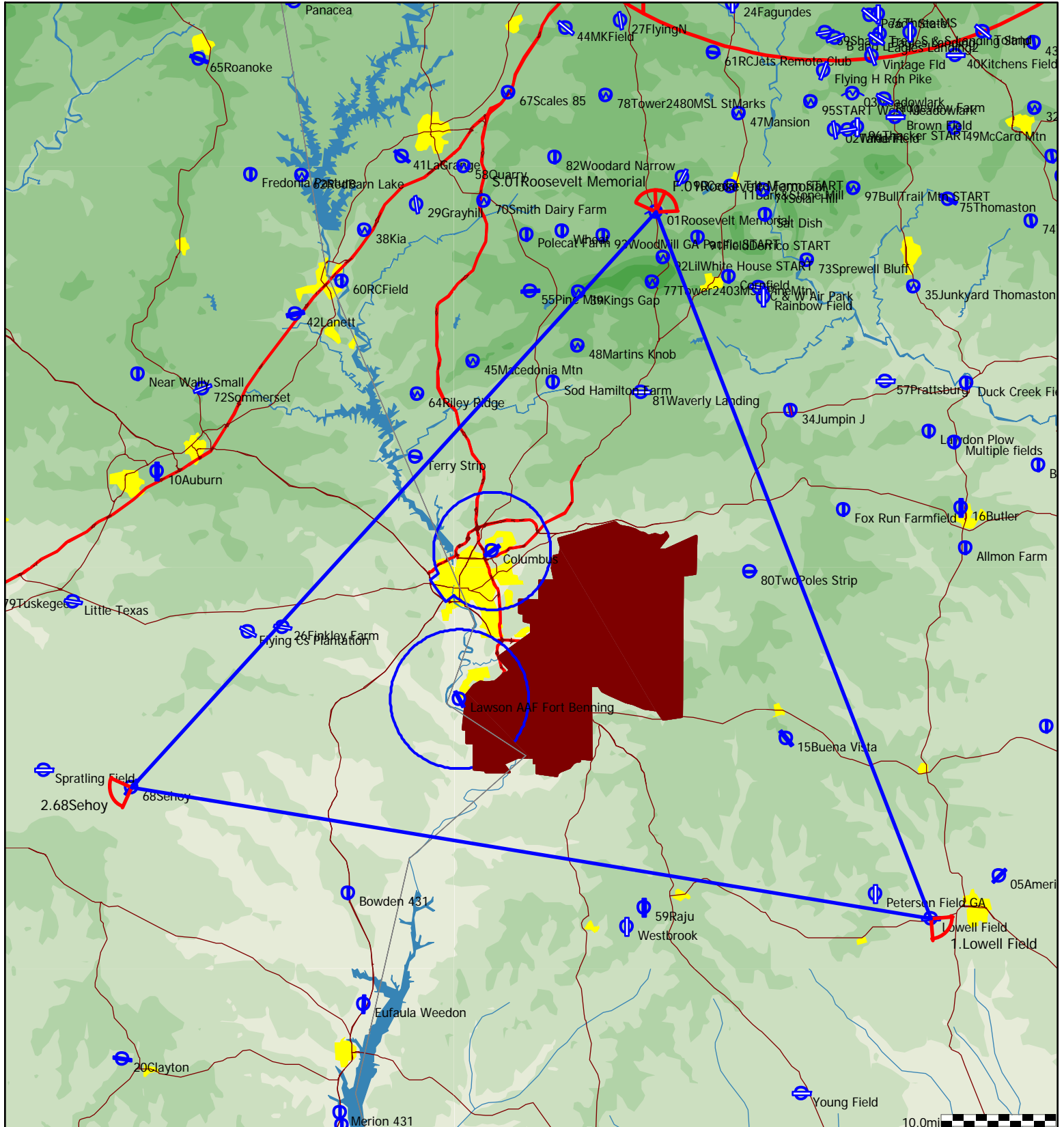




Type: FAI Triangle - (325.6km) [325.6pts]

Task distance: 202.3mi

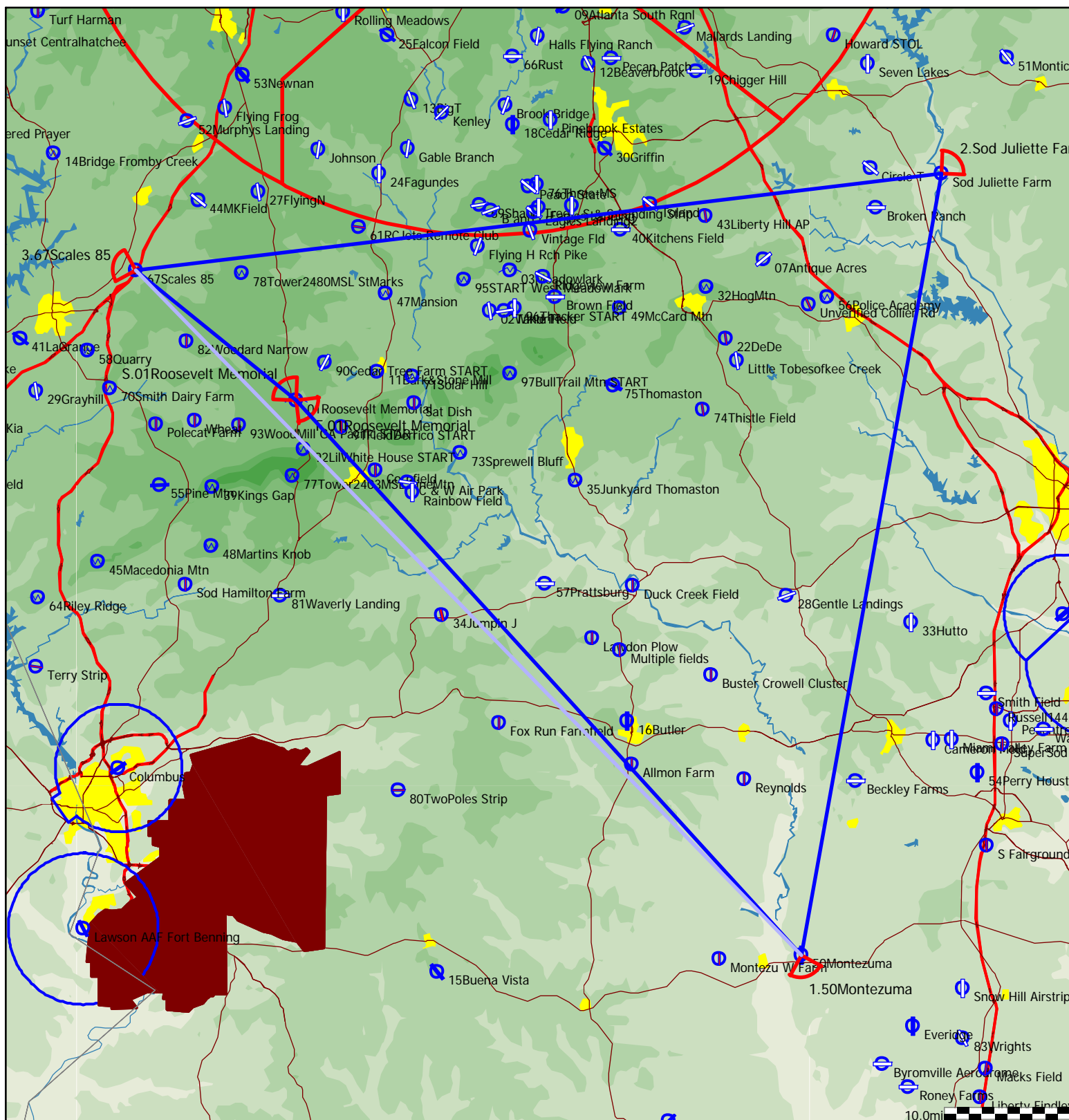
Style	Code	Points	Latitude	Longitude	Dis.	Crs.
Take off	01Rosevl	01Roosevelt Memorial	N32°56'19"	W084°41'47"		
Start	01Rosevl	01Roosevelt Memorial	N32°56'19"	W084°41'47"		
1.Point	Lowell	Lowell Field	N32°03'30"	W084°17'25"	65.1mi	159°
2.Point	68Sehoy	68Sehoy	N32°13'17"	W085°28'18"	70.2mi	280°
Finish	01Rosevl	01Roosevelt Memorial	N32°56'19"	W084°41'47"	67.0mi	42°
Landing	01Rosevl	01Roosevelt Memorial	N32°56'19"	W084°41'47"		



Type: FAI Triangle, Start on leg - (326.1km) [326.3pts]

Task distance: 202.8mi

Style	Code	Points	Latitude	Longitude	Dis.	Crs.
Take off	01Rosevl	01Roosevelt Memorial	N32°56'19"	W084°41'47"		
Start	01Rosevl	01Roosevelt Memorial	N32°56'19"	W084°41'47"		
1.Point	50Montez	50Montezuma	N32°18'07"	W084°00'27"	59.5mi	137°
2.Point	SodJul	Sod Juliette Farm	N33°11'54"	W083°48'58"	62.8mi	10°
3.Point	67Scales	67Scales 85	N33°05'15"	W084°54'55"	64.2mi	263°
Finish	01Rosevl	01Roosevelt Memorial	N32°56'19"	W084°41'47"	16.3mi	129°
Landing	01Rosevl	01Roosevelt Memorial	N32°56'19"	W084°41'47"		



Type: FAI Triangle - (326.7km) [326.7pts]

Task distance: 203.0mi

Style	Code	Points	Latitude	Longitude	Dis.	Crs.
Take off	01Rosevl	01Roosevelt Memorial	N32°56'19"	W084°41'47"		
Start	01Rosevl	01Roosevelt Memorial	N32°56'19"	W084°41'47"		
1.Point	05Amercs	05Americus	N32°06'39"	W084°11'20"	64.3mi	152°
2.Point	RCDixie	RC Dixie Remote Club	N32°59'03"	W083°32'09"	71.2mi	32°
Finish	01Rosevl	01Roosevelt Memorial	N32°56'19"	W084°41'47"	67.5mi	268°
Landing	01Rosevl	01Roosevelt Memorial	N32°56'19"	W084°41'47"		

